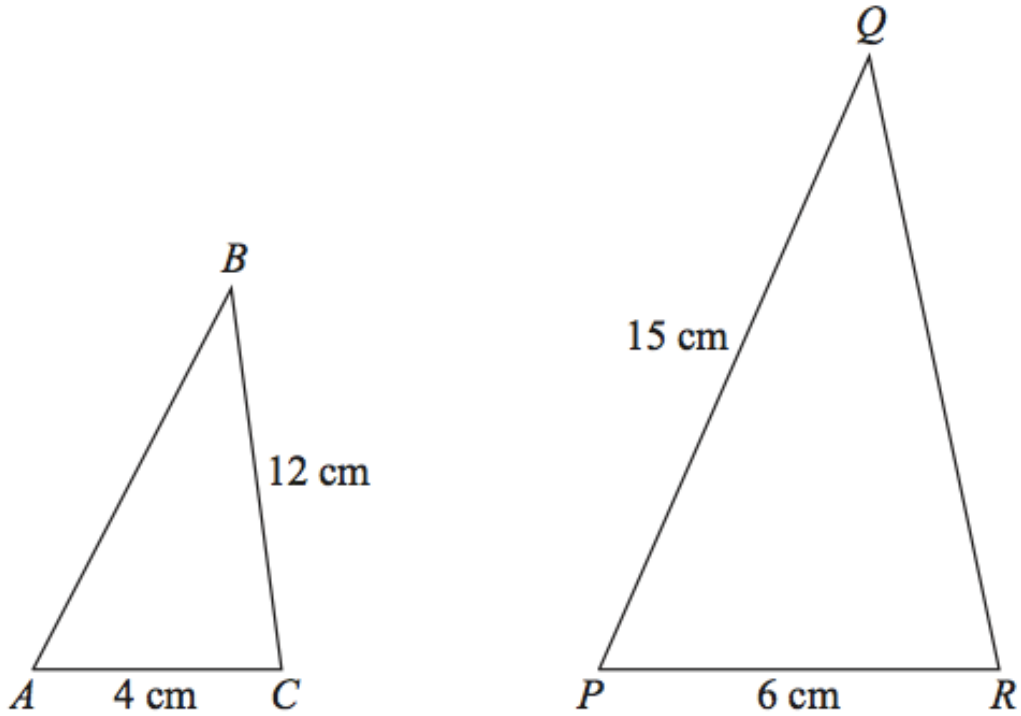


# Geometry - Similar Triangles



Triangles  $ABC$  and  $PQR$  are mathematically similar.

(a) Work out the length of  $QR$ .

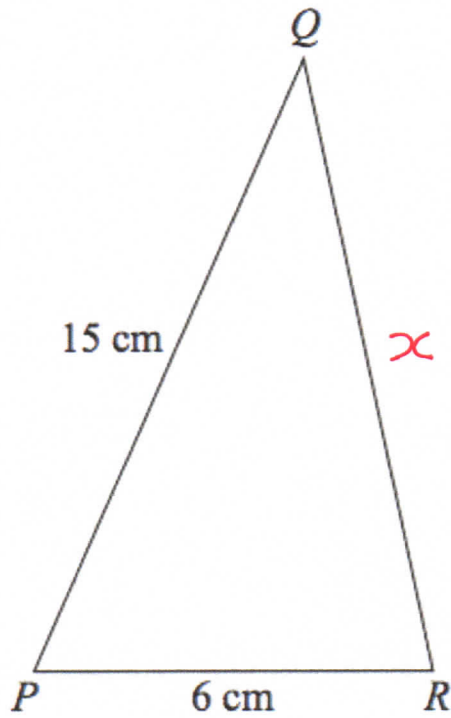
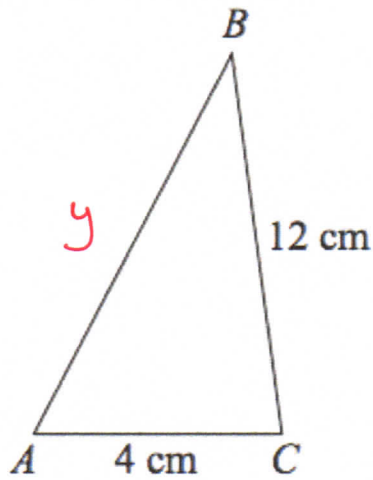
.....cm  
(2)

(b) Work out the length of  $AB$ .

.....cm  
(2)

## Geometry - Similar Triangles

$$\begin{aligned} AC : PR \\ = 4 : 6 \\ = 2 : 3 \end{aligned}$$



Triangles  $ABC$  and  $PQR$  are mathematically similar.

- (a) Work out the length of  $QR$ . Let  $QR = x$

$$x = 12 \times \frac{3}{2} = 18 \text{ cm}$$

..... $18$ .....**cm**  
**(2)**

- (b) Work out the length of  $AB$ . Let  $AB = y$

$$y = 15 \times \frac{2}{3} = 10 \text{ cm}$$

..... $10$ .....**cm**  
**(2)**